



# User Manual

Auction Market Theory priors, live in Bookmap

probabilities, not predictions

Version 1.4.x · Beta

SDES.DEV · [sdes.dev/amt-foresight](https://sdes.dev/amt-foresight) · [sean@sdes.dev](mailto:sean@sdes.dev)

Not financial advice. Data may be wrong. You alone verify every value and own every decision.

## What is AMT ForeSight?

---

AMT ForeSight is a Bookmap add-on that puts the reference points an Auction Market Theory trader works from — prior-day and overnight levels, the Initial Balance state machine, multi-day naked VPOCs, day-type and open-type reads — directly on your chart, each carrying a live hit rate and distance-to-price.

It does not tell you what will happen. It frames what usually happens around these levels given today's context, so you can weigh the odds and make your own call. Every number is an aggregate prior — today can and often does override the average.

AMT ForeSight ships as one add-on with two tiers:

- Free tier — the AMT stats window: prior-day & overnight levels with hit rates and distance, day-type / open-type classification with a directional bias read, and the Day-structure line.
- Pro tier — everything you draw, customise, automate or broadcast: the IBC / IBF / IB30 framework panel, on-chart level lines, per-level styling, Custom Levels, multi-day HTF tracked levels with automatic naked-VPOC detection, and multi-feed Cloud Notes publishing.

One .jar, gated at runtime by a license key. The stats window runs with no key; entering a key unlocks Pro.

The AMT framework and the IBC / IBF reference statistics are grounded in publicly taught Auction Market Theory (Dalton / Market Profile). AMT ForeSight is the software that surfaces them on your chart — it is not affiliated with, nor a substitute for, any specific educator's course.

## What you need

---

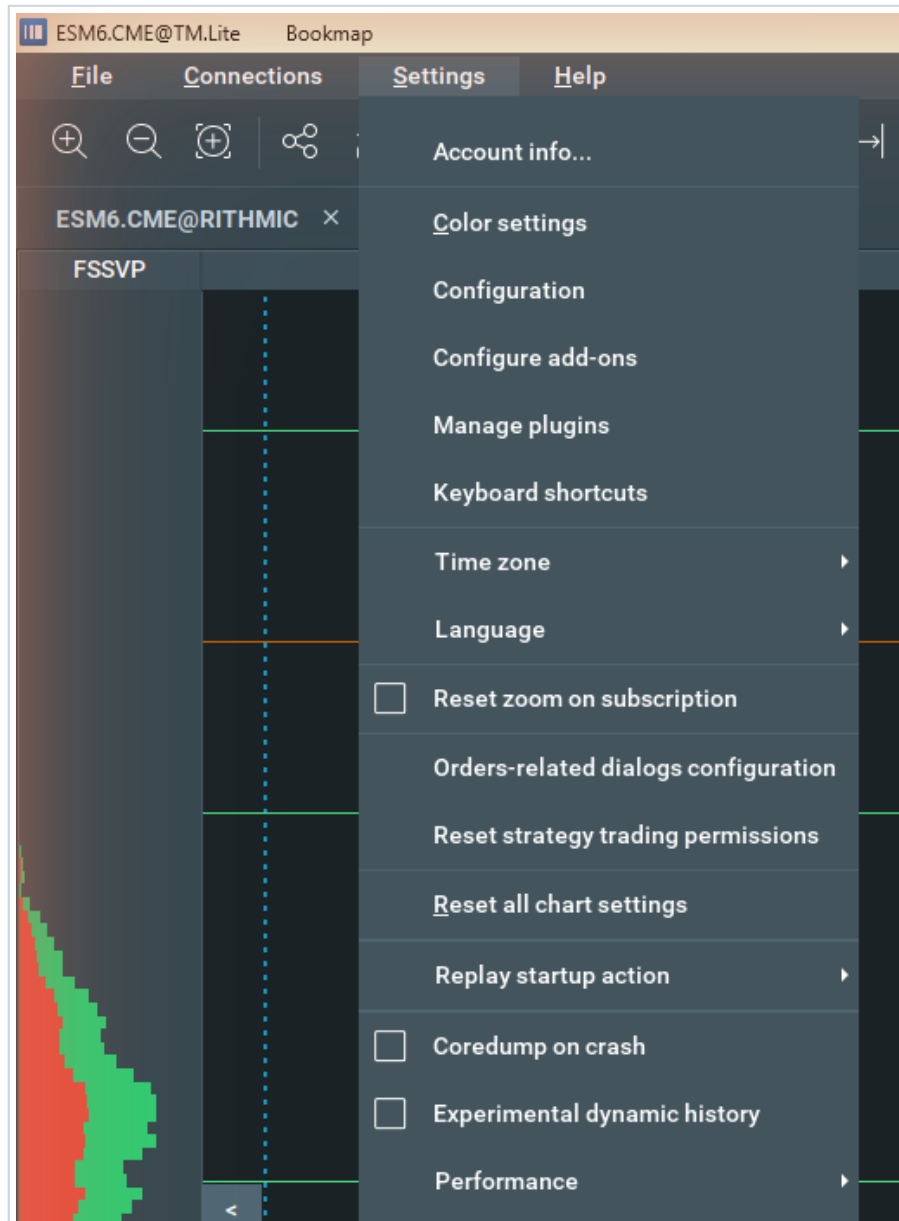
- Bookmap v7.6.0 or later.
- A Rithmic data feed for the current beta. AMT ForeSight reads ticks directly from Rithmic while running inside Bookmap. Support for Bookmap's other feeds is pending Bookmap's developer approval of the add-on.
- Windows for Pro: license activation uses a Windows machine fingerprint.

## Getting started (quick start)

You will be running in a few minutes. Steps 1–3 get the free stats window on your chart; step 4 unlocks Pro.

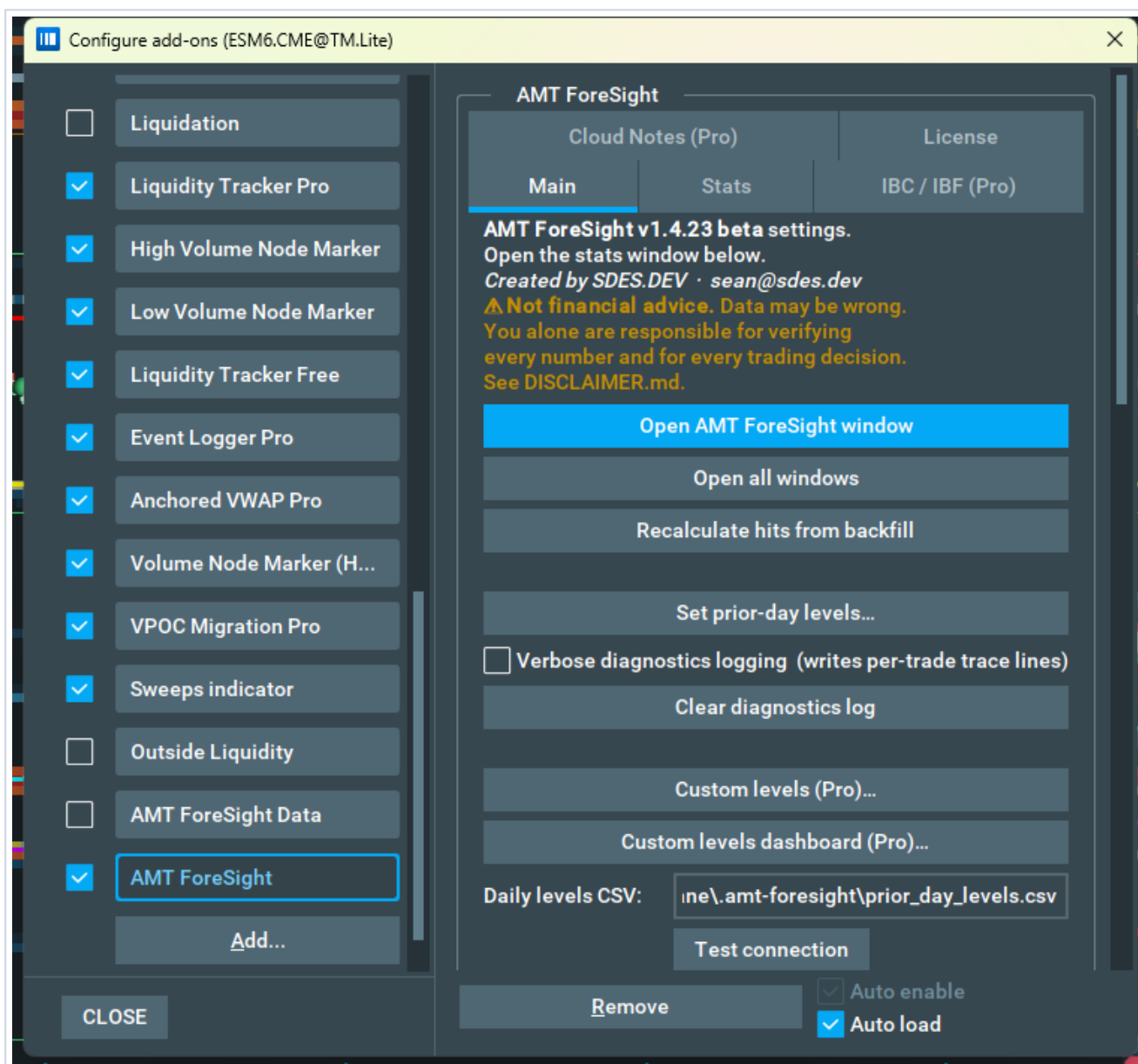
### 1 — Add the add-on to Bookmap

Download `amt-foresight.jar` from [sdes.dev/amt-foresight](https://sdes.dev/amt-foresight). In Bookmap, open the Settings menu and choose Configure add-ons (the four-diamond toolbar button opens the same window).



Bookmap's Settings menu — Configure add-ons is the entry point for installing the add-on.

In Configure add-ons click Add..., point it at the amt-foresight.jar you downloaded, then tick AMT ForeSight in the list to enable it and tick Auto load so it starts with every chart.



The Configure add-ons window: AMT ForeSight enabled in the list on the left, its Main settings tab on the right, Auto load ticked.

## 2 — Open the stats window

On the Main tab, click Open AMT ForeSight window. The free stats window appears and starts tracking.

## 3 — Point it at your prior-day levels

AMT ForeSight needs the prior session's reference values to classify the day. Click Set prior-day levels... and enter the required Prior-day RTH values (P High / P Low / P Close / P VPOC / P VAH / P VAL);

overnight and Initial-Balance fields are optional overrides. (Or point Daily levels CSV on the Main tab at a CSV that supplies them.) Overnight levels are captured automatically during Globex.

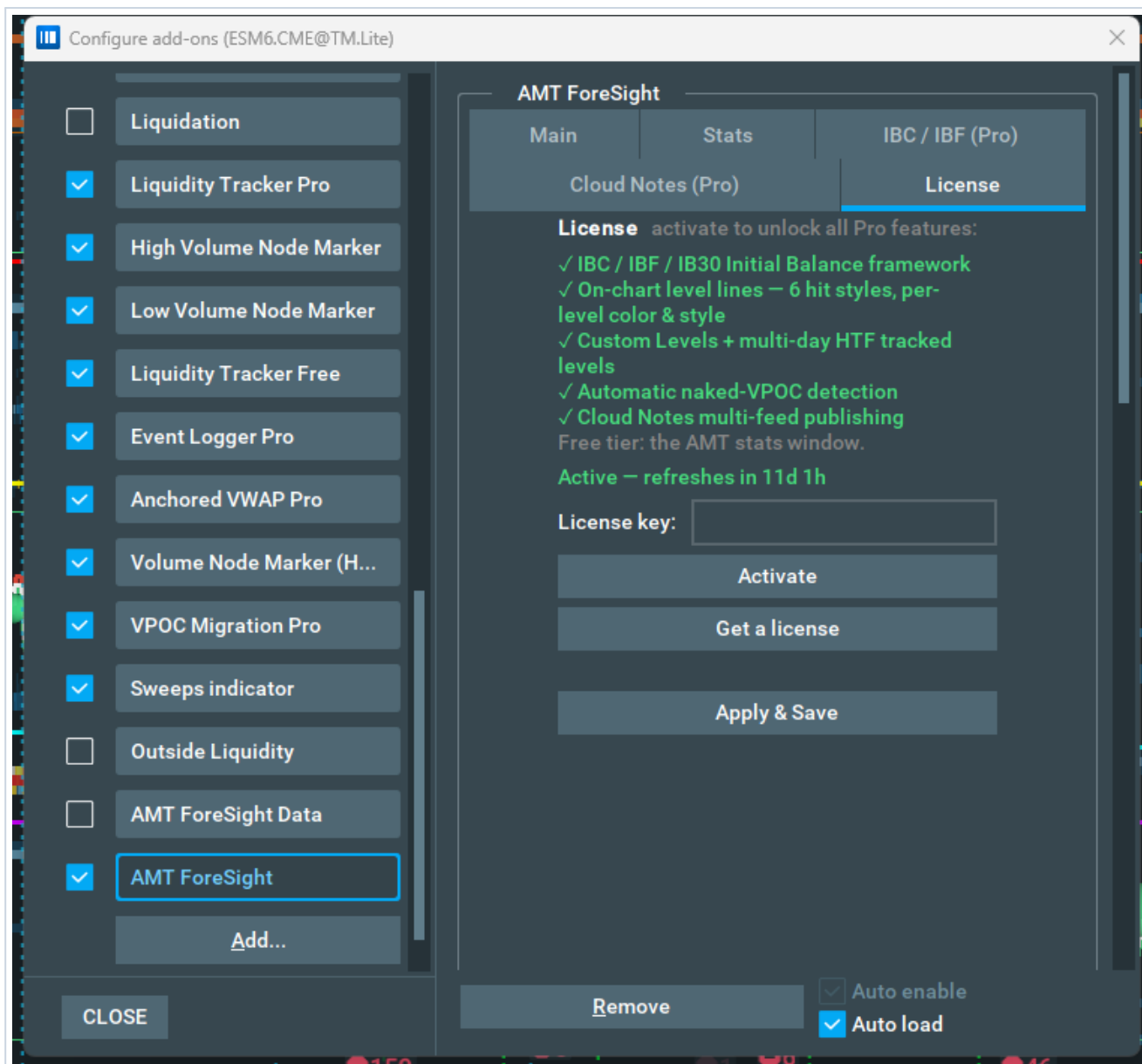
Prior-day RTH required for opening-type classification	
P High:	7557.25
P Low:	7515.0
P Close:	7554.25
P VPOC:	7539.5
P VAH:	7543.5
P VAL:	7529.25
<b>Overnight</b> optional – leave blank to use addon's live tracking	
ONH:	
ONL:	
ON VPOC:	
ON Mid: (auto from ONH + ONL if blank)	
<b>Initial Balance (override)</b> optional – only fill to manually override addon's self-computed IB	
IBH:	
IBL:	

Clear all Cancel Save & close

The Set prior-day levels window — required RTH values, optional overnight and IB overrides.

#### 4 — Activate Pro (optional)

Open the License tab, paste your activation key, and click Activate. The stats window works without a key; activation unlocks the framework panel, chart lines, Custom & HTF levels, and Cloud Notes.



The License tab. Activation unlocks the five Pro feature groups listed; the free tier is always the stats window.

Recommended chart-style starting point. The chart-line defaults already ship tuned to the developer's own ANGLE setup — a good place to start, then adjust to taste: Hit behavior = ANGLE, Label position = ORIGIN, Fixed-pixel angle = on, Angle pixel offset X = -80, Angle pixel offset Y = -50 (with Angle extension -3 pts, Angle duration -1 min, Dim level 128, STOP+/ANGLE+ opacity 128). All on Settings → Stats.

# The stats window FREE

The stats window is the heart of the free tier — a single, always-on-top panel that classifies the day and tracks every reference level live.

The screenshot shows the AMT ForeSight interface for ESM6.CME@TM.Lite. The window is titled 'AMT ForeSight' and has a toolbar at the top with buttons for 'Reload CSV', 'Set prior-day levels...', 'HTF levels (Pro)...', 'Custom levels (Pro)...', and 'Cloud Notes (Pro)...'. There are also checkboxes for 'Always on top' and 'Show chart', and a 'Balance' dropdown set to 'AUTO'. The main display area is divided into several sections: 'LEVELS' with a table of levels and their hit rates, 'HTF LEVELS' for multi-day tracked levels, 'NEXT UP' for nearest un-hit levels, 'PAIRED STATS' for probability of both halves of a pair getting tagged, and 'HIT SEQUENCE' for a timestamped log of hits. A footer section shows '0 / 7 levels hit' and version information.

**Toolbar - day-type override, prior-day / HTF / Custom level editors, and the Cloud Notes (Pro) publisher**

**Opening context + directional bias. The Day-structure line (outside/inside day, value migration) appears here once RTH opens**

**LEVELS - each framework level with its hit-rate %, name, price and live distance to price**

**HTF LEVELS - multi-day tracked levels (naked VPOCs, composite VPOC/VAH/VAL) with drift vs the prior saved value**

**NEXT UP - the nearest un-hit levels, sorted by distance**

**PAIRED STATS - probability that both halves of a pair get tagged today**

**HIT SEQUENCE - timestamped log of every level price tagged this session**

**Levels-hit count, active stat column, session clock, version and disclaimer**

Anatomy of the AMT ForeSight stats window.

## Toolbar

A Day type override (leave on Auto-detect to let the add-on classify), an Instrument selector, Always on top, Reload CSV, and the editors — Set prior-day levels..., HTF levels (Pro)..., Custom levels (Pro)..., and Cloud Notes (Pro)... Show chart toggles the on-chart lines; Balance shows the live in/out-of-balance

read.

Running more than one chart? Use the Instrument selector to lock AMT ForeSight to the contract you want (e.g. ES). On Auto it follows whichever instrument Bookmap binds — fine for a single chart, but with two charts open it could pick up the wrong feed. Pick your contract once; the choice persists, so every restart binds correctly from attach. (Switching mid-session rebinds live immediately, but reload Bookmap or scrub a replay for the new instrument's full history.)

## LEVELS

Every framework level on one row: a hit-rate % bar (how often this level is tagged on a comparable day), the level name, its price, and the live distance to current price. Un-hit levels sort to the top.

## HTF LEVELS

Multi-day tracked levels — naked VPOCs, composite VPOC/VAH/VAL, single prints, area gaps — each showing drift versus its prior saved value. These persist across sessions until tagged.

## NEXT UP, PAIRED STATS, HIT SEQUENCE

NEXT UP lists the nearest un-hit levels by distance. PAIRED STATS shows the probability that both halves of a pair (e.g. IBH & IBL, P VAH & P VAL) get tagged today. HIT SEQUENCE is a timestamped log of every level price tagged this session.

## Reading the day FREE

### Opening context, open type & bias

As soon as RTH opens, AMT ForeSight classifies the open type relative to the prior day's value and range (open-drive, open-test-drive, in-range / out-of-range variants such as HIR-IV / LIR-OV) and derives a directional bias. The context line under the title carries this read; pre-open it shows an estimated type from the current price.

### Day type

The Day type dropdown classifies the developing session (Normal, Normal Variation, Trend, Double Distribution Trend, Neutral, Balanced). On Auto-detect it updates live as the profile develops — a working hypothesis, not a closing label — and you can override it manually.

### The Day-structure line FREE

Once RTH opens, a compact Day-structure read appears under the context/bias line, built from public Auction Market Theory:

- Range — Outside day / Inside day / Range ext ↑ / Range ext ↓ (today's high & low versus the prior day's).
- Value — today's developing value area versus the prior value area: Higher / Lower / Inside / Unchanged / Overlapping (→ higher / → lower) value.
- Value migration — a multi-day streak (e.g. 3rd day higher) as value migrates in one direction.

- Non-confirmation — a "new high/low, value lagging" warning when a fresh extreme prints but value has not followed.

Each read is marked forming intraday and flips to confirmed at the RTH close. The whole line can be switched off in Settings → Main (Show AMT day-structure line).

# Initial Balance: IBC / IBF / IB30 PRO

The IBC / IBF window tracks the first hour's Initial Balance live and frames what usually happens after it breaks — continuation versus failure — with reference probabilities keyed to today's open type.



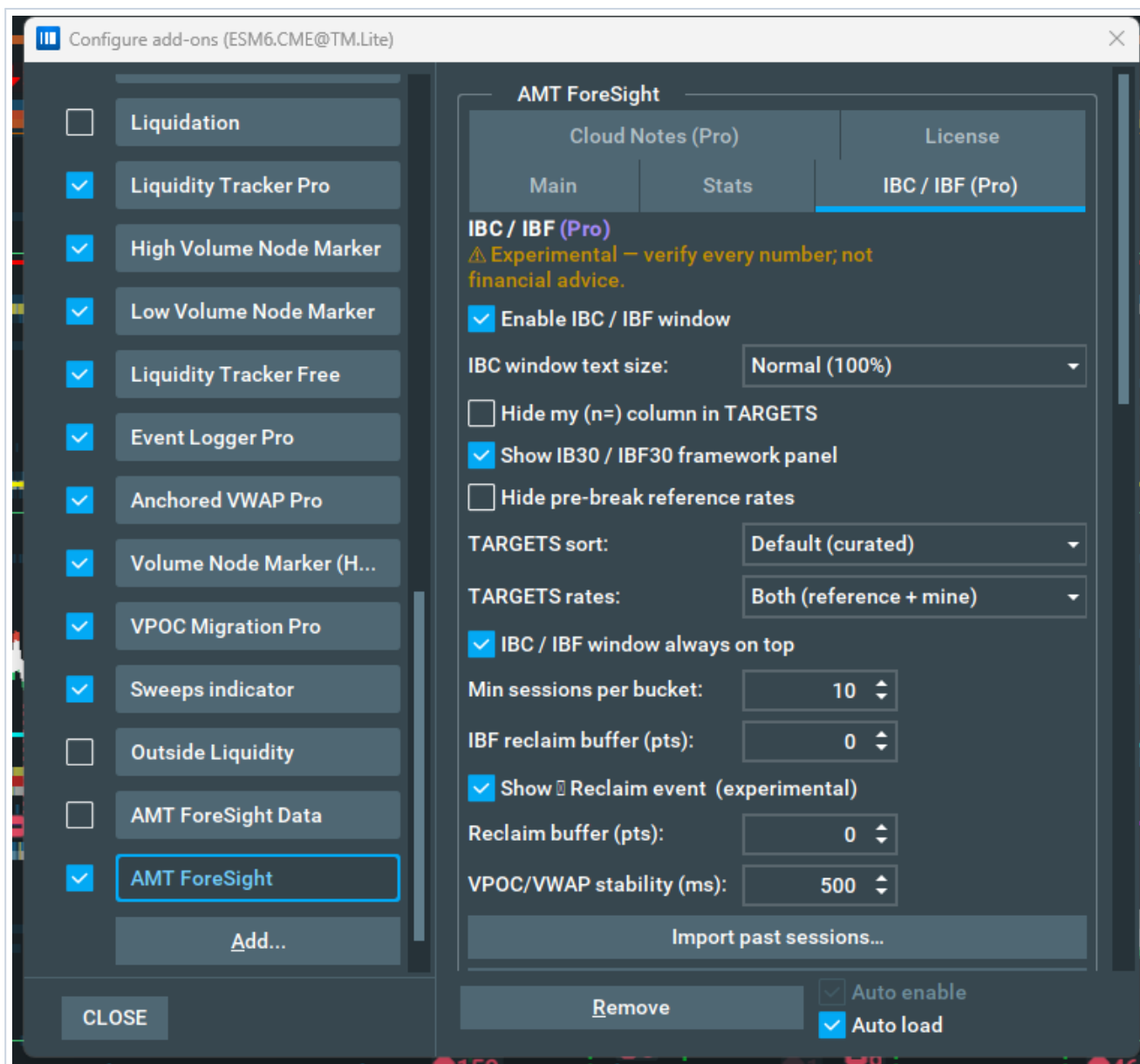
The IBC / IBF window: a WATCHING / CONFIRMED state machine, the IB30 / IBF30 section, and the reference-rate tables.

- WATCHING / CONFIRMED — the live state machine: first IB break, two-reclaim failure, reclaim events and IB-Neutral, each moving from watching to confirmed as price acts.
- IB30 / IBF30 — the 30-minute Initial Balance and its post-scale reference rates (toggled by Show IB30 / IBF30 framework panel).

- REFERENCE RATES — aggregate prior probabilities (return-to-VPOC, extension hit rates, target hit rates). What usually happens across many sessions — today's context can override them.

## IBC / IBF settings

Configured on Settings → IBC / IBF (Pro):

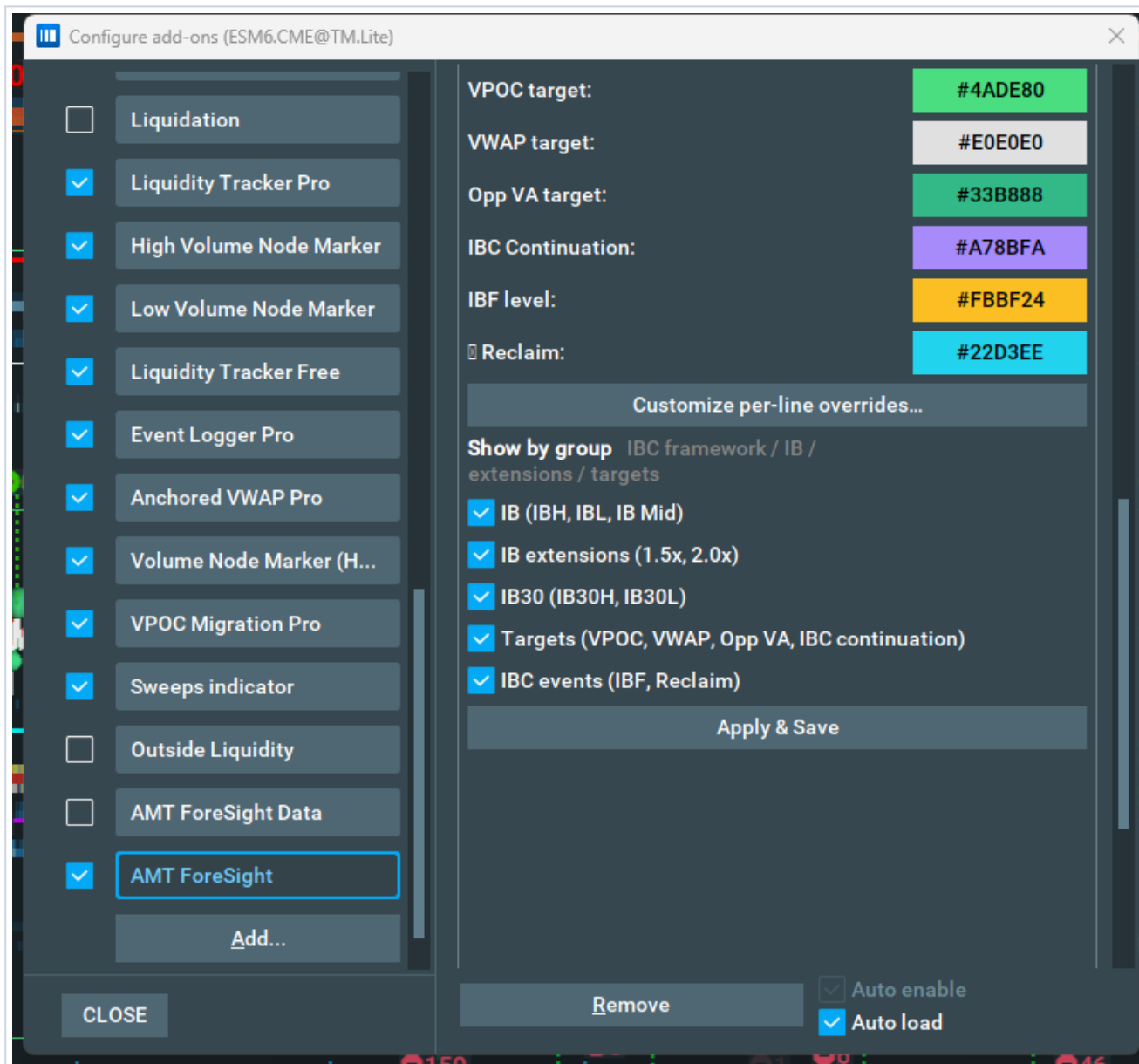


The IBC / IBF (Pro) settings tab — framework options.

- IBC window text size — Small (85%) · Normal (100%) · Large (115%) · Extra large (130%) · Huge (150%).
- TARGETS sort — Default (curated) · by probability · by distance to price.
- TARGETS rates — Reference only · Mine only · Both (reference + mine).

- Plus Show IB30/IBF30 panel, Hide pre-break reference rates, reclaim buffers, Min sessions per bucket, and Import past sessions... to seed your own stats.

The tab also sets the per-line chart colours for the framework lines, extensions and targets:



IBC / IBF chart-line colours for the framework lines, extensions, and targets.

## On-chart level lines PRO

With Pro, every framework level is drawn as a horizontal line on the Bookmap chart, labelled with the level name and (optionally) the time it was tagged.



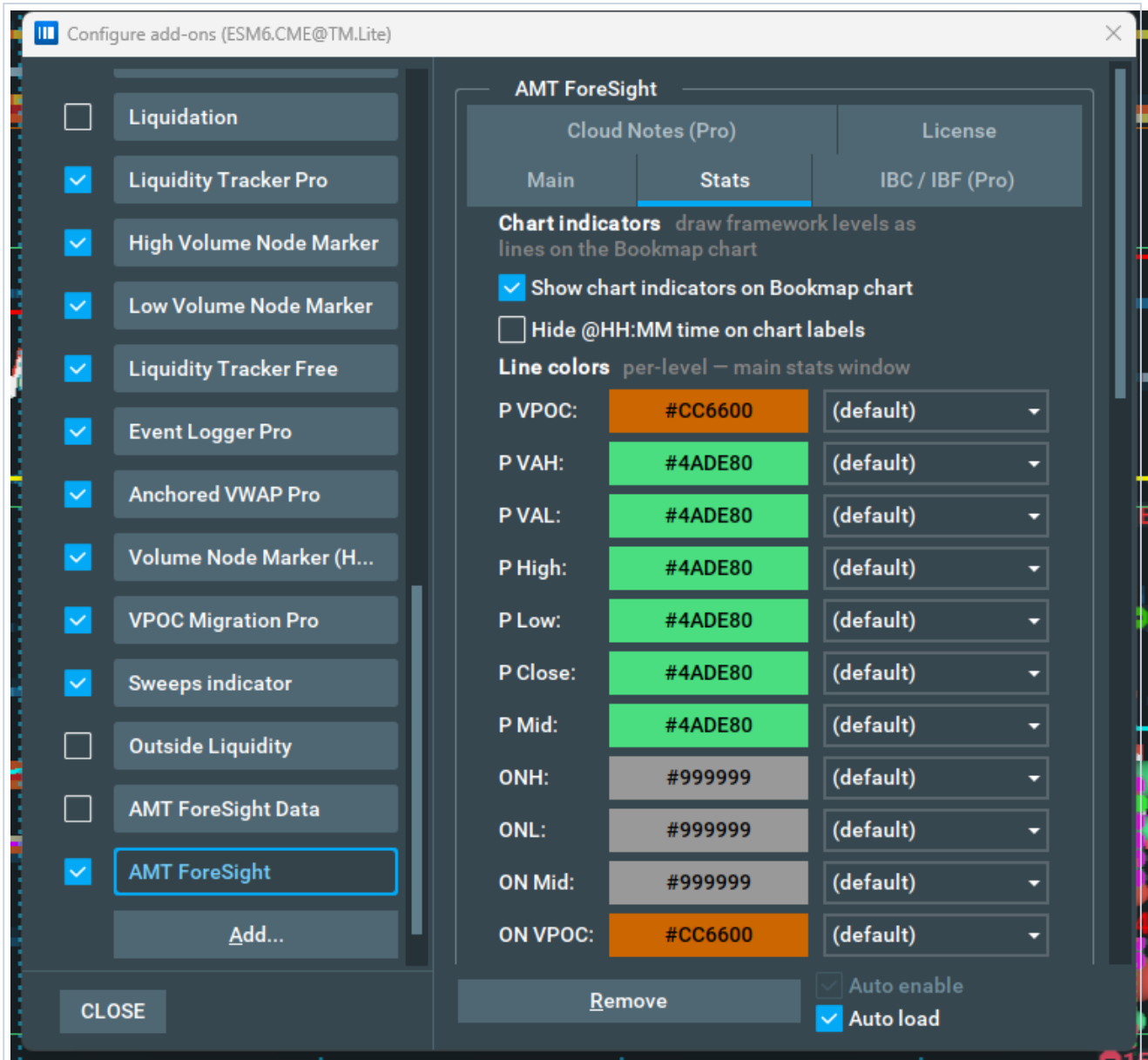
Framework levels on the chart: prior-day & overnight tags pinned to the price axis, target labels showing points gained and times tagged, and level lines whose style changes when price tags them.

### Hit styles

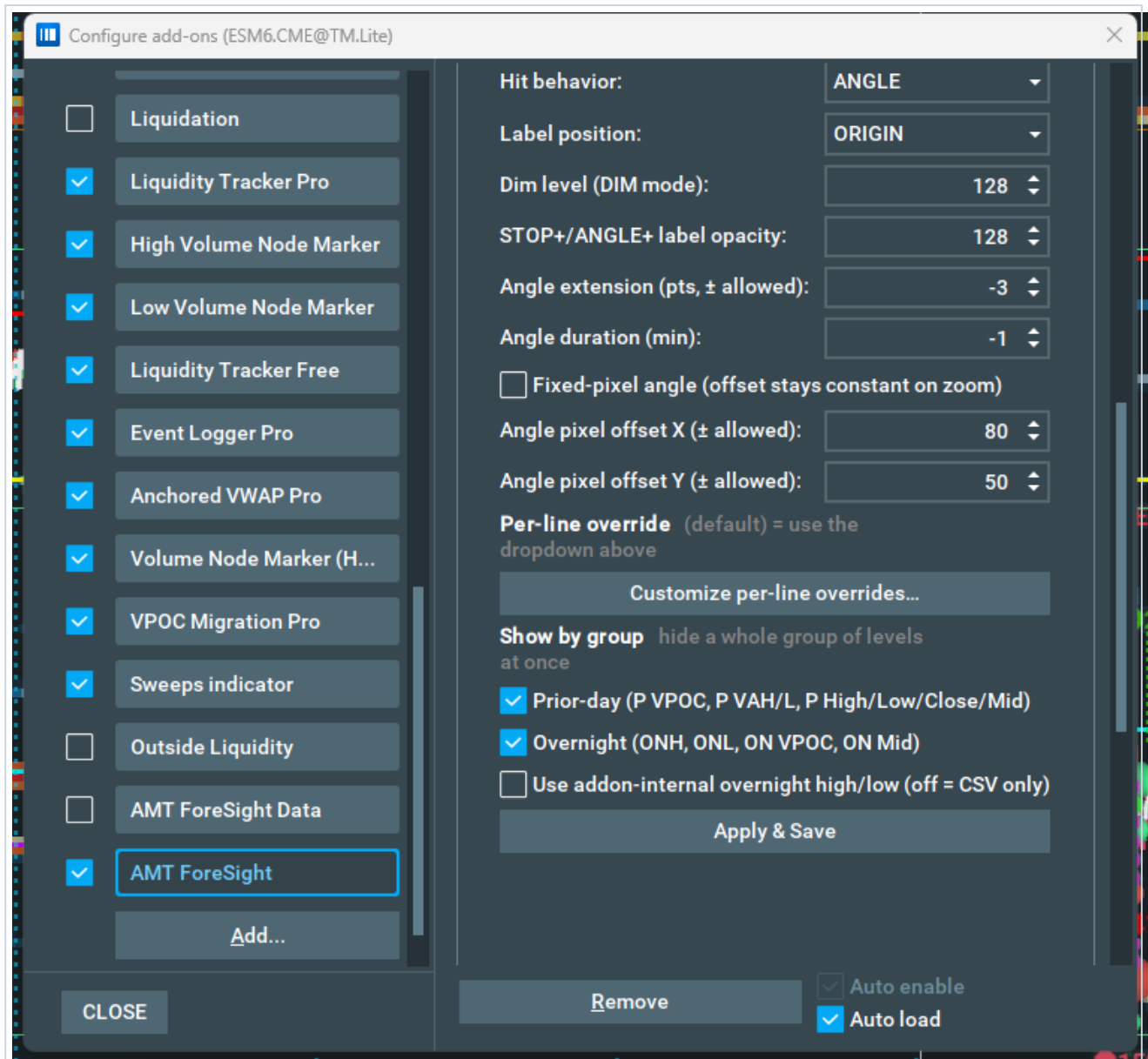
Each level can change appearance the moment price tags it. Set a global default (Hit behavior, Settings → Stats) and override per level:

Style	Behaviour on hit
DASH	line switches to short dashes
DIM	line fades to a configurable opacity
STOP	line truncates at the hit; a marker freezes the label there
STOP+	STOP, plus a higher-opacity frozen label
ANGLE	line truncates; a slanted "trajectory" overlay is drawn at the hit
ANGLE+	ANGLE, plus a higher-opacity frozen label
HIDE	line disappears after the hit
NONE	no change

Line style options are (default) / Solid / Dashed / Wide dash / Hidden; display is (default) / Both / Line only / Label only / Hidden.



Settings → Stats: chart-indicator toggles and the per-level line colours for prior-day and overnight levels.

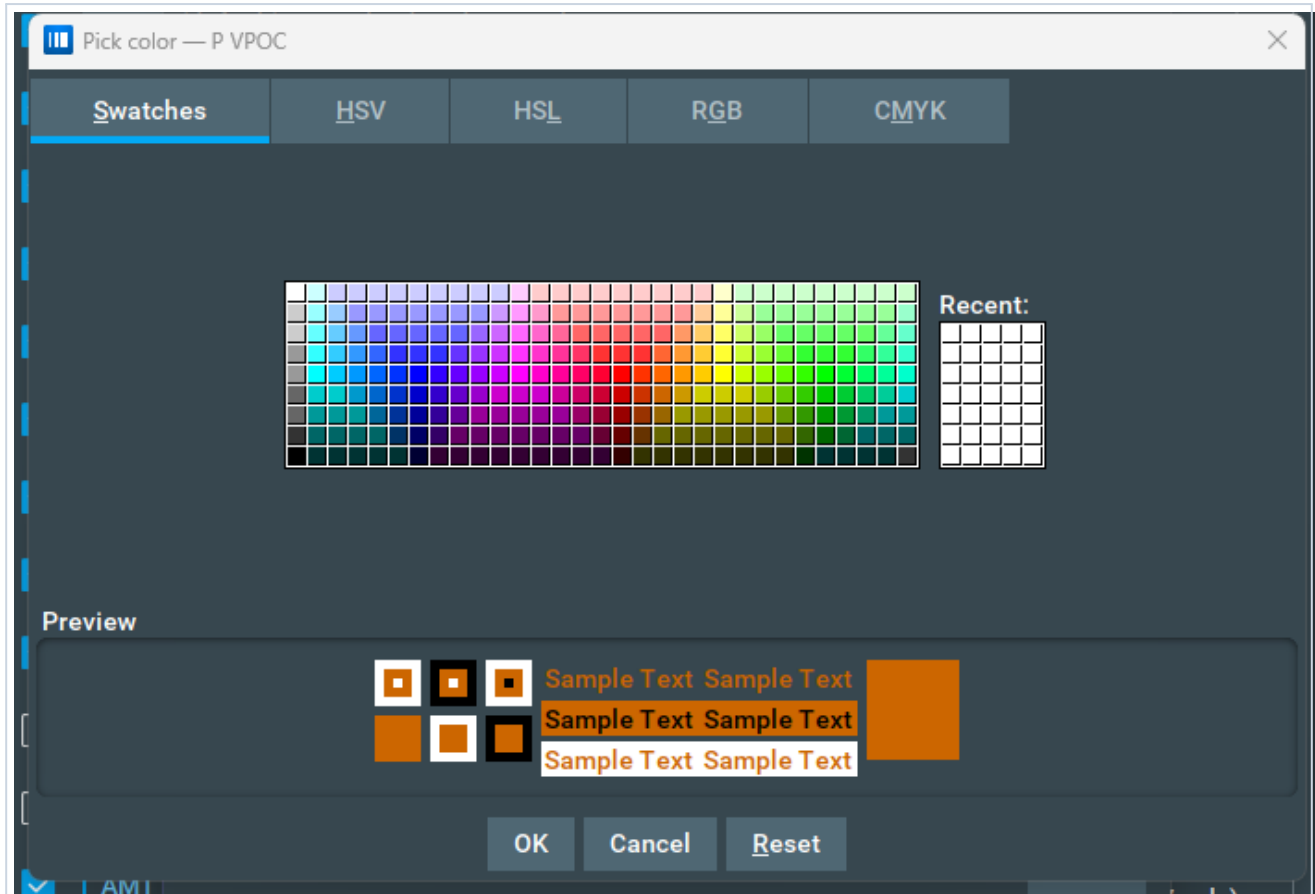


Settings → Stats, continued: hit behaviour, label position, dim level and the ANGLE-mode geometry.

Recommended starting point: Hit behavior ANGLE, Label position ORIGIN, Angle extension –3 pts, Angle duration –1 min. Then adjust to taste.

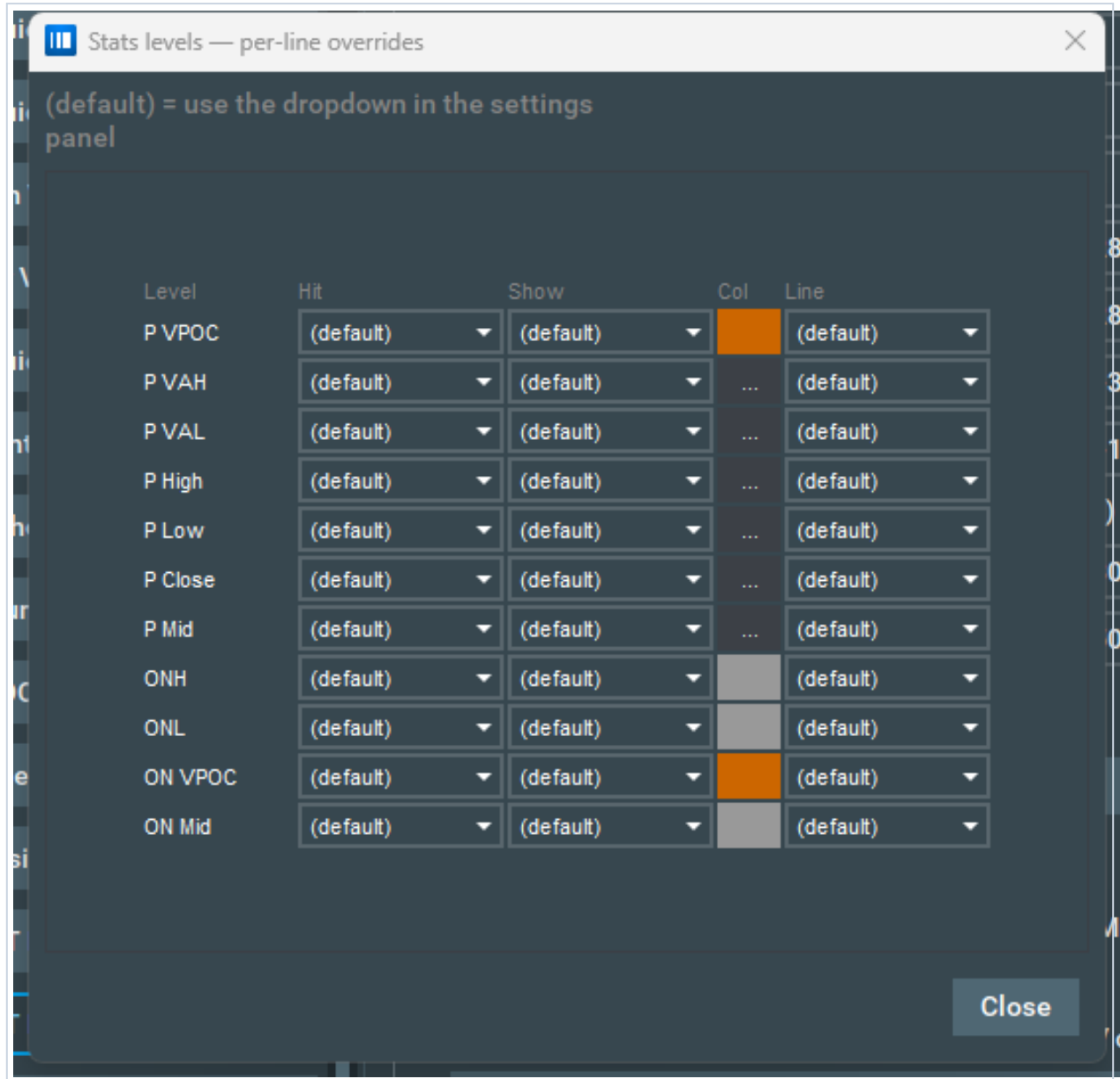
## Per-level styling PRO

On Settings → Stats each level has its own colour and line style. Click a colour swatch to open the picker:



The colour picker — Swatches / HSV / HSL / RGB / CMYK with a live preview.

The Customize per-line overrides... dialog gives every level its own Hit / Show / Colour / Line override in one grid; (default) means "use the dropdown in the settings panel". Right-click a colour cell to clear it (the level falls back to its group colour).

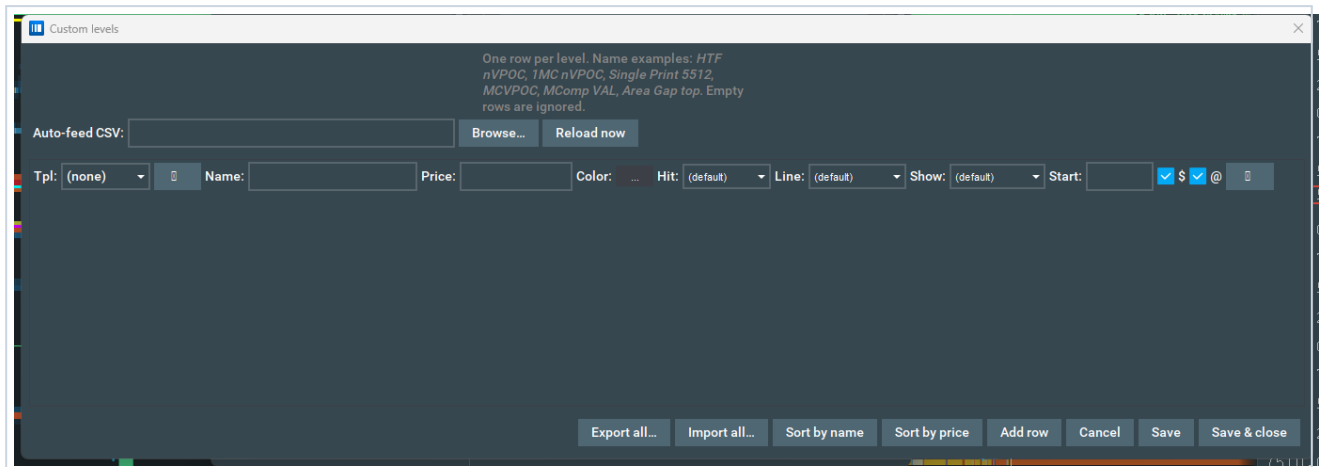


The per-line overrides grid — Hit / Show / Colour / Line per level.

The framework families (IB lines, extensions, IB30, targets) have the same override grid on the IBC / IBF tab.

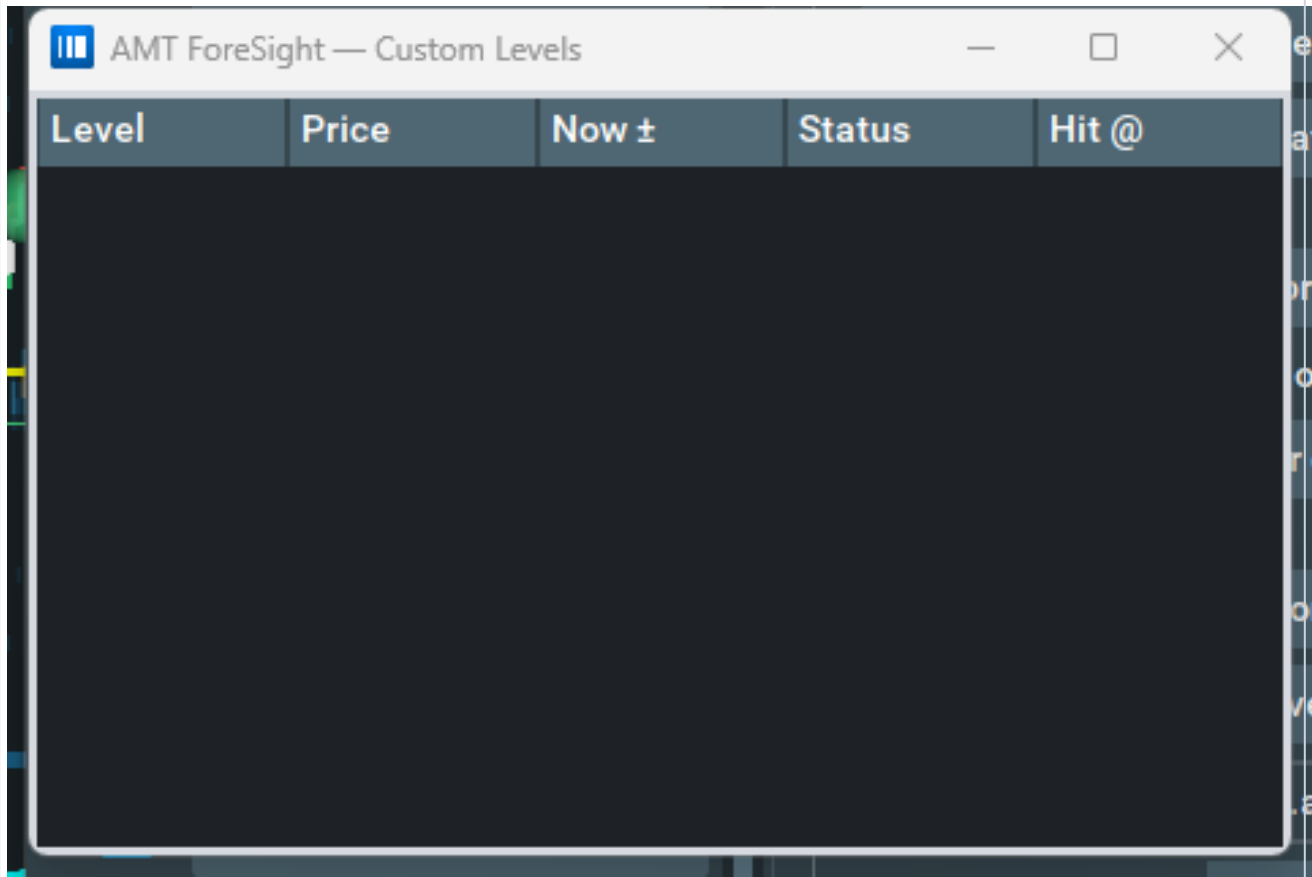
## Custom Levels PRO

Add your own named price levels — they flow through the same hit-detection, chart-drawing and Cloud Notes machinery as the built-ins.



The Custom Levels editor: a per-level row (template, name, price, colour, hit-style, line, display, start time), an optional auto-feed CSV, and import/export.

Type levels one per row, or point Auto-feed CSV at a file and the editor hot-reloads whenever it changes. A separate Custom Levels dashboard gives a live readout — each custom level with its distance to price (Now  $\pm$ ), Status, and hit time:



Level	Price	Now ±	Status	Hit @
-------	-------	-------	--------	-------

The live Custom Levels dashboard — Level / Price / Now ± / Status / Hit @ (shown empty here).

## Multi-day HTF levels & automatic naked VPOCs PRO

The Tracked levels dialog holds higher-time-frame levels that persist across sessions: naked VPOCs, composite VPOC / VAH / VAL, single prints and area gaps. Each row shows its type, name, price, styling, and a Status / Drift read versus the prior saved value. A level stays active until price tags it, remains visible for the rest of that day, then expires the next session (an expired bucket keeps the history, toggled by Show expired).

Tracked levels (multi-day persistent)

**Tracked levels — multi-day persistent.**  
Levels persist across sessions until deleted or hit. A hit level remains visible today, then auto-expires tomorrow. MCVPOC/VAH/VAL show drift vs the prior saved value.

Type	Name	Price	Hit-style	Display	Persist	Status / Drift
Naked VPOC	5.25 NVPOC	7558.50	(default)	BOTH	(default)	active — +0.00 vs 2026-05-27 (7558.50)
Naked VPOC	5.22 NVPOC	7507.75	(default)	BOTH	(default)	active — +0.00 vs 2026-05-27 (7507.75)
Naked VPOC	5.21 NVPOC	7465.25	(default)	BOTH	(default)	active — +0.00 vs 2026-05-27 (7465.25)
MC VPOC	MCVPOC	7420.00	(default)	BOTH	(default)	active — +0.00 vs 2026-05-27 (7420.00)
MC VAH	MCVAH	7454.00	(default)	BOTH	(default)	active — +0.00 vs 2026-05-27 (7454.00)
MC VAL	MCVAL	7358.75	(default)	BOTH	(default)	active — +0.00 vs 2026-05-27 (7358.75)
Other	5.25 ATH	7569.75	(default)	BOTH	(default)	active — +0.00 vs 2026-05-27 (7569.75)
Naked VPOC	5.5 NVPOC	7287.00	(default)	BOTH	(default)	active — +0.00 vs 2026-05-27 (7287.00)
Naked VPOC	5.4 NVPOC	7230.00	(default)	BOTH	(default)	active — +0.00 vs 2026-05-27 (7230.00)

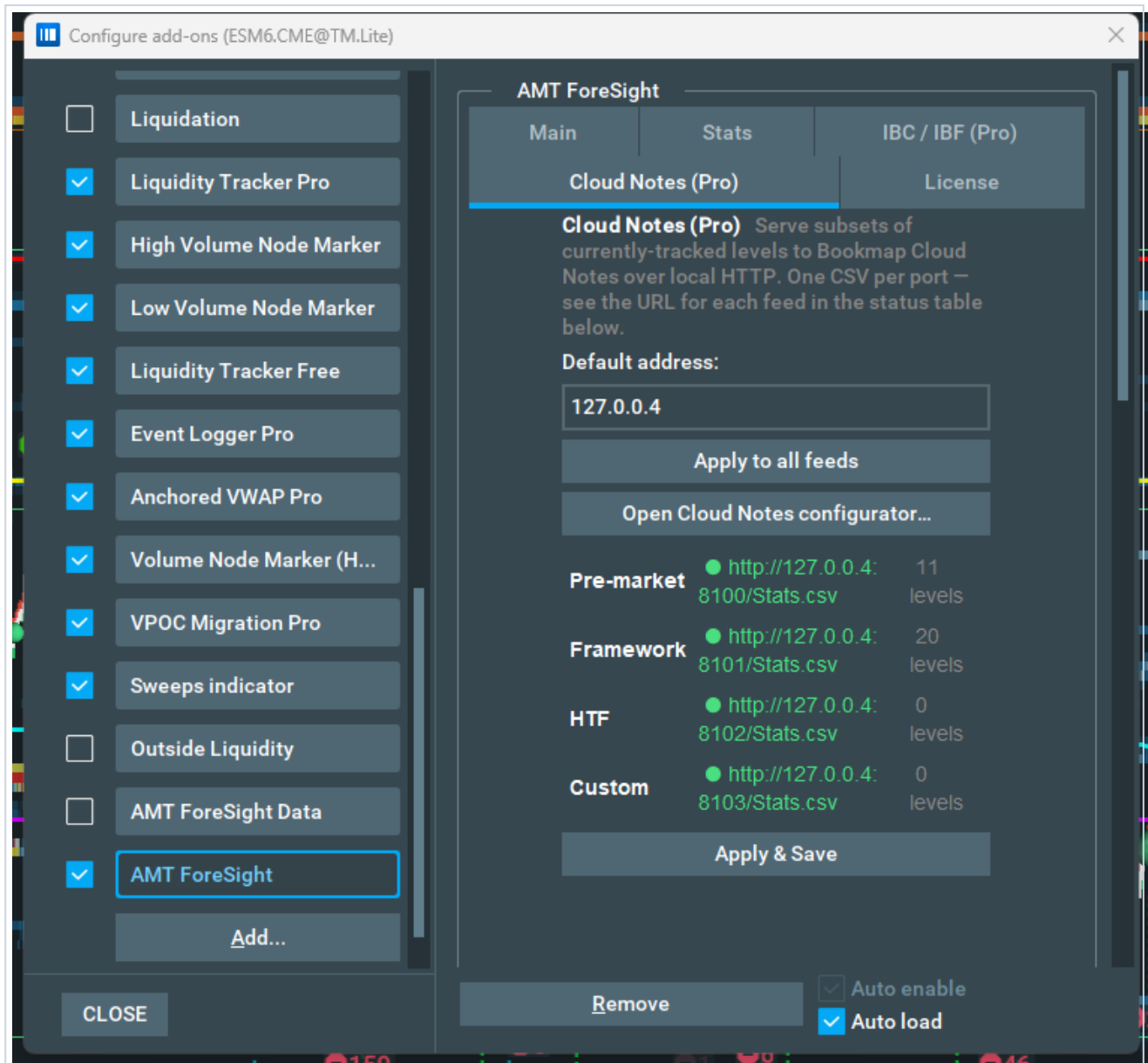
+ Add row  Show expired

The Tracked levels dialog — multi-day persistent levels with per-level styling and drift versus the prior saved value.

Automatic naked VPOCs: at each session rollover the prior session's VPOC is captured and added as a dated naked level automatically. It stays naked until price trades back to its exact price, then expires.

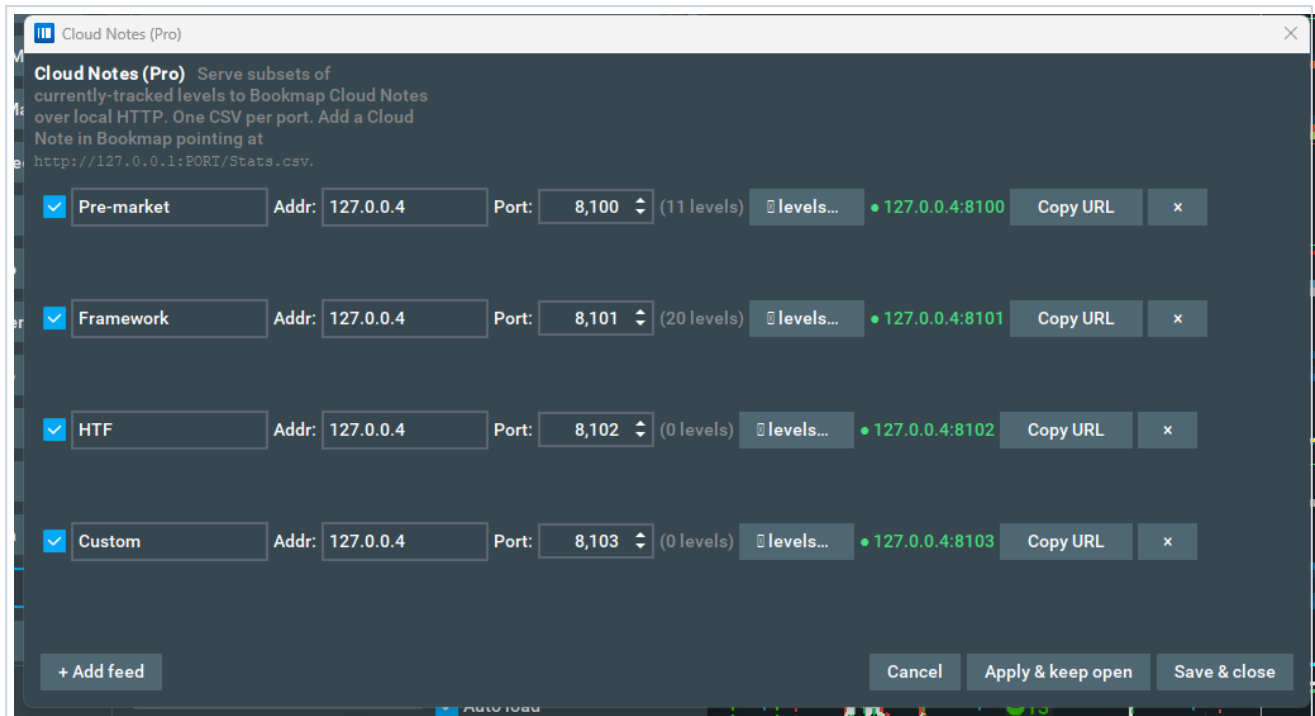
## Cloud Notes feeds PRO

Cloud Notes publishes any subset of your tracked levels to Bookmap's Cloud Notes panel over local HTTP — multiple categorised feeds, each on its own port, with per-level colours that inherit your chart styling. The Settings → Cloud Notes (Pro) tab shows the live status of each feed:



The Cloud Notes (Pro) settings tab — default address and the live status table for each feed.

Open Cloud Notes configurator... opens the full editor — enable a feed, set its bind address and port, pick its levels, and copy its URL:



The Cloud Notes configurator: one feed per row, each with its own address, port, level picker, live status and Copy URL.

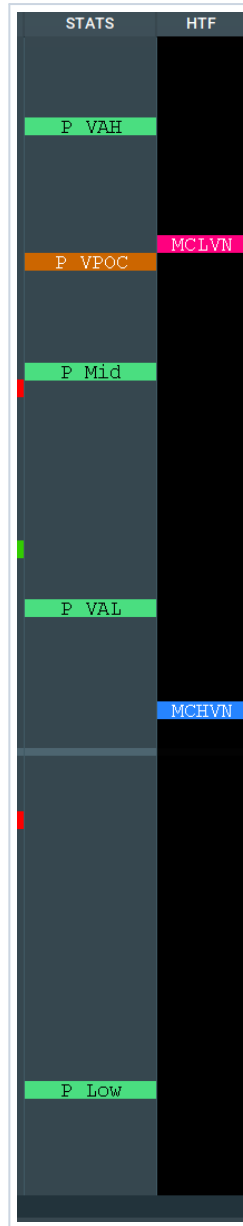
The levels... picker groups every available level (Overnight, Prior day, Initial Balance, IB30, IBC events, tracked, custom); each has a background/text colour swatch, and the ... button resets a level's Cloud Note colours so they inherit from its chart-line colour:



The per-feed level picker — grouped levels with per-level colour swatches that inherit from the chart styling.

## Sending a feed to a Bookmap Cloud Notes column

1. In the configurator, enable a feed and click levels... to choose what it carries.
2. Click Copy URL — e.g. <http://127.0.0.4:8100/Stats.csv>.
3. In Bookmap, add a Cloud Notes column (right-click the column-header area) and paste the feed URL.
4. The levels appear on the next poll, in their broadcast colours.



The receiving side: two Bookmap Cloud Notes columns. The STATS column carries the prior-day feed (P VAH / P VPOC / P Mid / P VAL / P Low); the HTF column carries composite levels (MCLVN / MCHVN). Colours match the publisher's per-level styling.

## Sessions, rollover & replay safety

---

AMT ForeSight uses a proper Globex session model: the session rolls at 18:00 ET, with RTH/ETH hit-gating and a configurable session window and timezone (Settings → Main). Prior-day and overnight levels are re-captured right up to the bell.

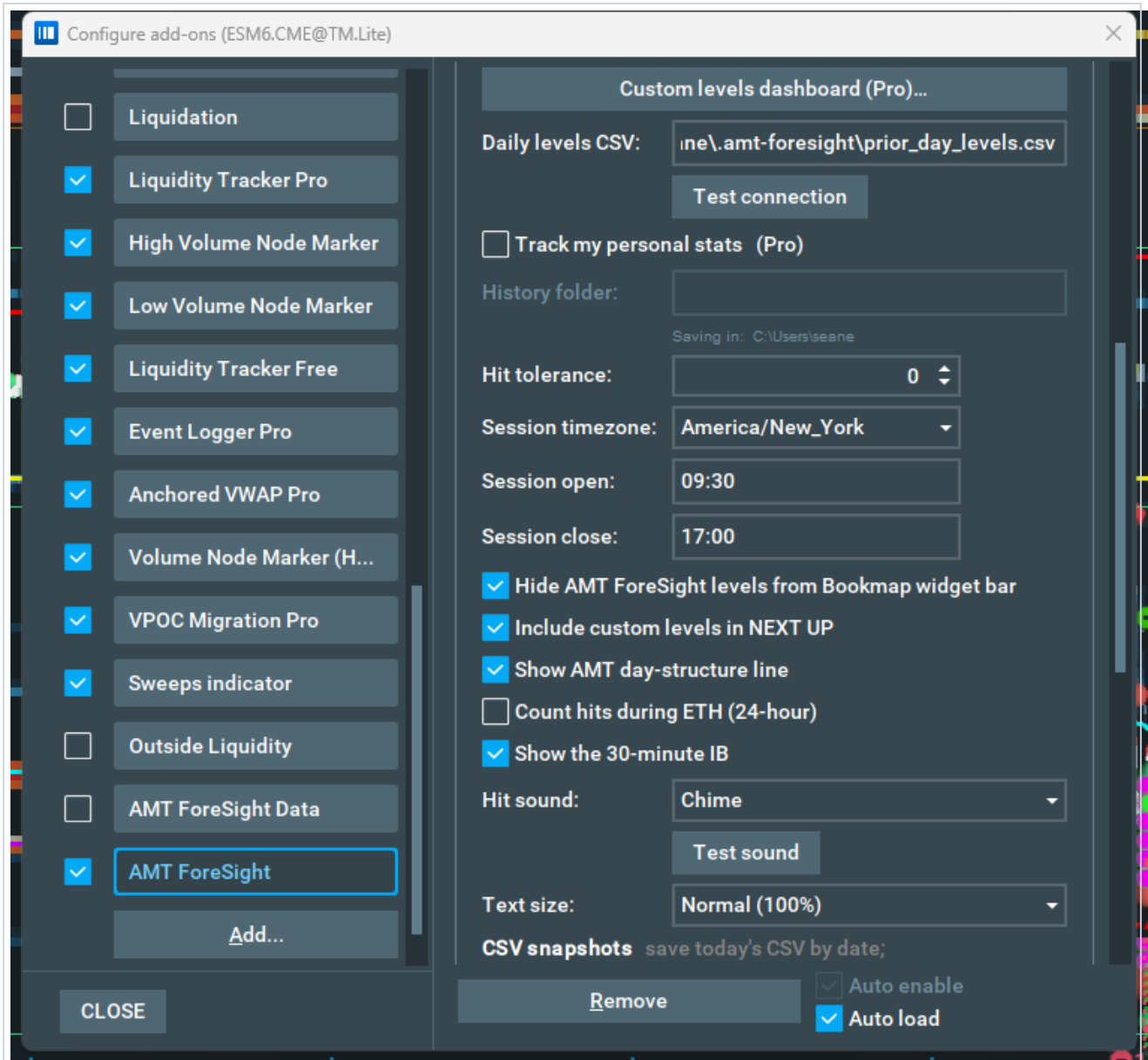
Replay is always safe. Your saved levels, hit history, naked VPOCs, custom levels and Cloud Notes feeds are never altered by a Bookmap replay — live builds the record, replay only observes it. Scrub freely.

Self-contained recovery. Hits, levels and session state persist to disk and restore on a mid-session restart, without depending on backfill depth or any external source. Settings survive an uninstall/reload.

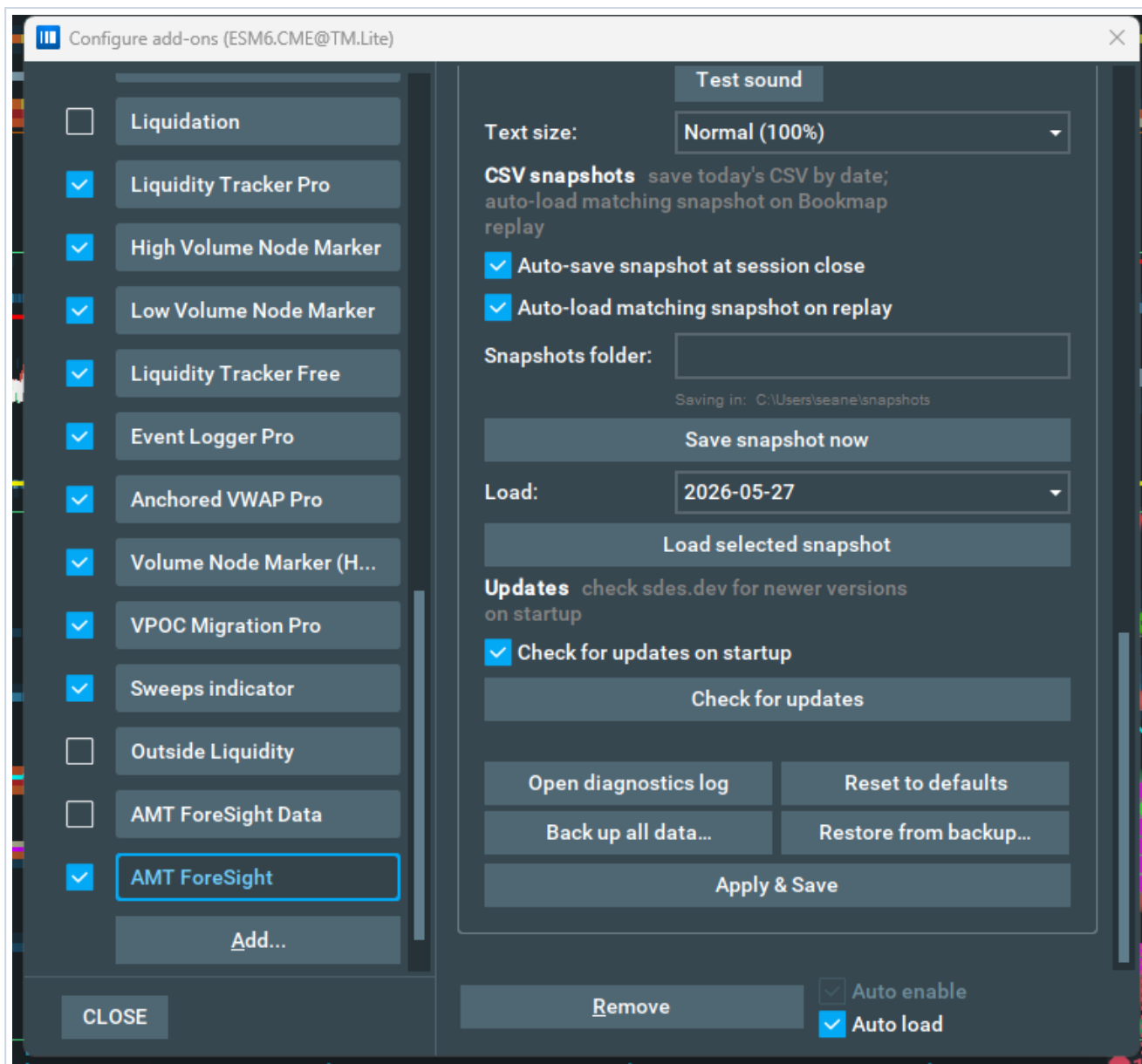
## Settings reference

---

The add-on's settings live in Bookmap's Configure add-ons window across five tabs: Main, Stats, IBC / IBF (Pro), Cloud Notes (Pro), and License. The Main tab holds the windows, the prior-day CSV, session window/timezone, the level toggles (including Show AMT day-structure line), hit sound, CSV snapshots (auto-save / auto-load on replay), update checks, and backup/restore:



Settings → Main, middle — personal stats, session timezone/open/close, level toggles, hit sound.



Settings → Main, bottom — CSV snapshots, updates, diagnostics, backup/restore, Apply & Save.

## Licensing & activation

Pro is unlocked with an activation key entered on the License tab. The key binds to your machine via a hashed Windows machine ID and is verified by a cryptographically signed token that refreshes automatically, with an offline grace window so a brief loss of connectivity never locks you out mid-session. The add-on never stores payment details. One key activates one machine at a time.

## Updating

AMT ForeSight checks the website once per live session and shows a banner in the window's version line when a newer build is published. Click the version line to open the download page, then replace the .jar in Bookmap's add-ons.

## Support

---

- Email questions and bug reports are free — write to [sean@sdes.dev](mailto:sean@sdes.dev). Replies are not instant (expect a day or two) but every email gets a real answer.
- Live screen-share setup help is available as a paid 1-on-1 session.

## Disclaimer

---

AMT ForeSight is not financial advice. Every statistic is an aggregate prior, and data can be wrong. You alone are responsible for verifying every number and for every trading decision. See `DISCLAIMER.md`. Markets involve substantial risk of loss.